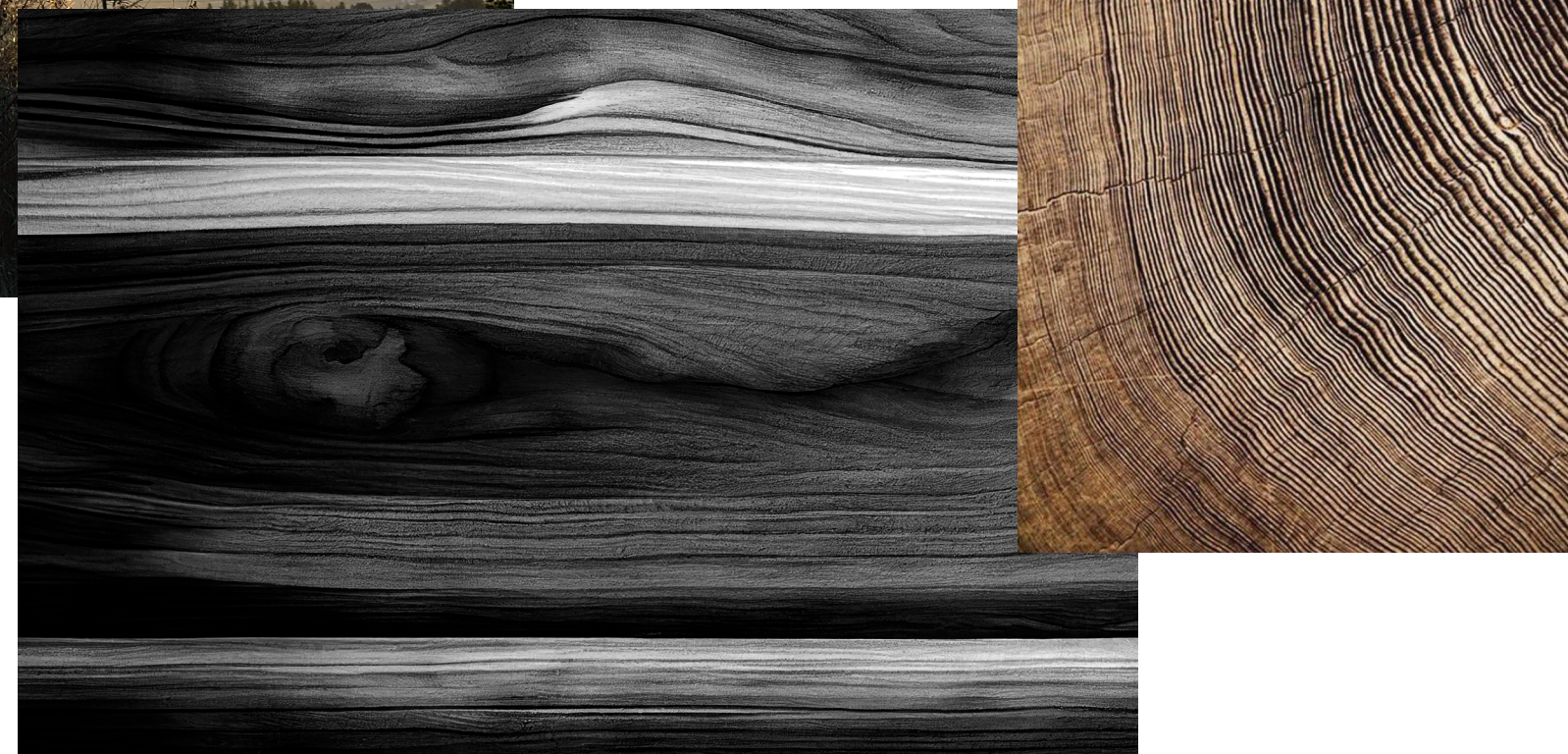
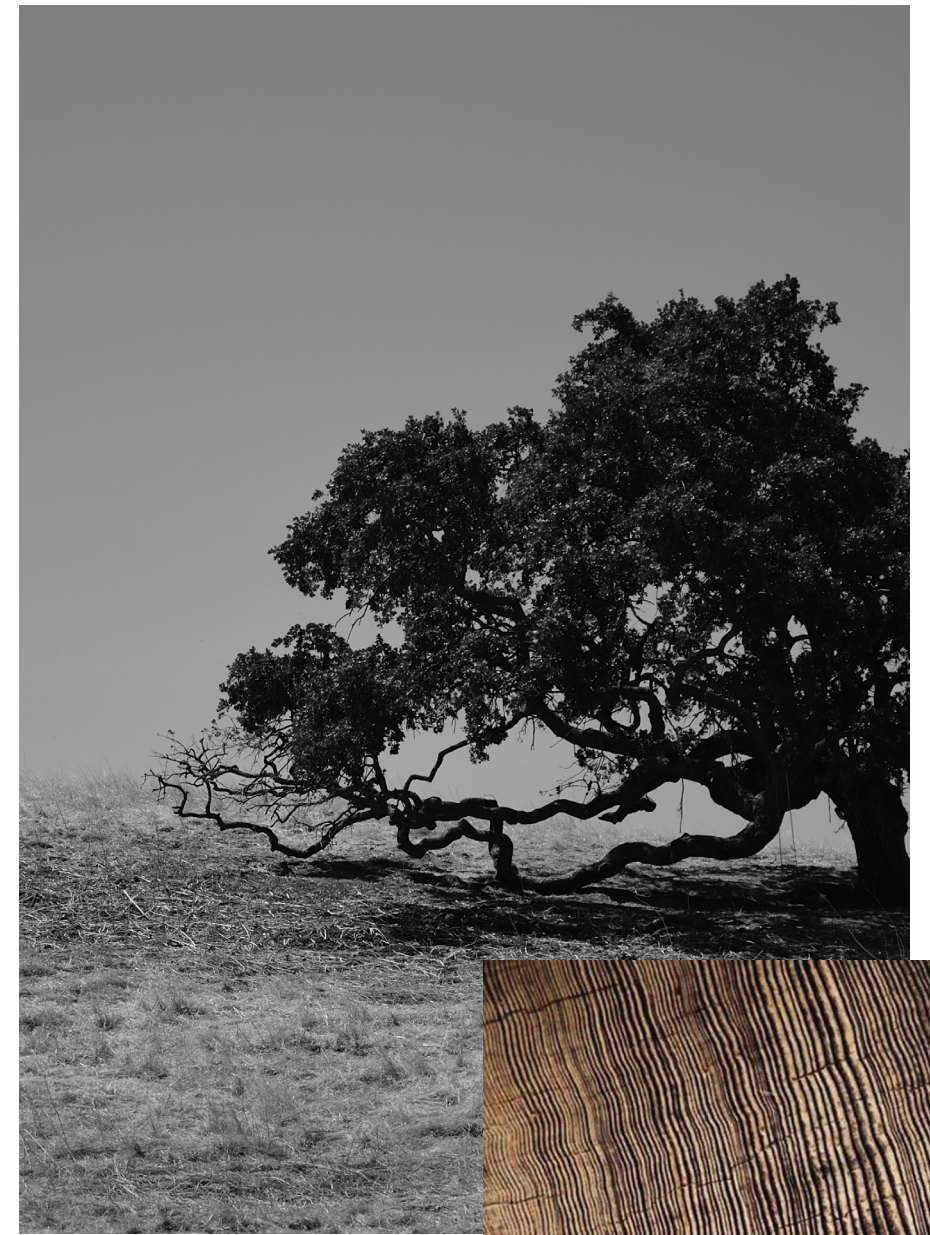


CULTURE OF FLOORS

22
YEARS
OF LUXURY
HANDCRAFTED
FLOORS



FINEX is an international manufacturer of prime wooden flooring.

The company was established in 2001 by entrepreneurs Marina Melekhova and Ivan Melekhov, yet its roots are deeply intertwined with a family heritage tracing back to the 18th century. Andrey Aleksandrovich Melekhov, the great-great-grandfather of the current co-owners, dedicated his life to woodworking. Since then, each successive generation of the Melekhovs has remained closely connected to the forestry industry.

FINEX stands out as one of the rare global entities capable of breathing life into the boldest visions of designers and architects. The key strength lies in the company's own timber mill located in Russia, enabling the crafting of distinctive products.

For over two decades, FINEX has maintained its position as the market leader in natural wood flooring. This success can be attributed not only to the high production standards and innovative technologies employed in crafting our products but also to the exceptional professionalism of the team. This commitment ensures that collaboration with FINEX is consistently comfortable and highly productive.

OUR PRODUCTION

FINEX stands out as a premier manufacturing company on the global stage, adept at transforming the boldest concepts of designers and architects into reality. One of the company's key strengths lies in its two state-of-the-art factories in Russia, enabling the creation of distinctive products that consistently astonish partners with a diverse array of premium-quality offerings.

22
YEARS IN
THE MARKET



5 GENERATIONS

of the Melekhov family, the founders of FINEX, have played a pivotal role in the evolution of the woodworking industry in Russia. Leveraging their extensive experience, coupled with modern European equipment and cutting-edge production technologies, FINEX ensures the highest standard of board geometry.

1 000 000 sq. m

of wooden floor coverings per year is the production capacity of two FINEX factories in Russia

2 MANUFACTURING FACILITIES

equipped with high-tech European equipment.

200+ DESIGNS

of flooring and over 100,000 unique combinations.

30-YEAR WARRANTY

generally provided for our products

600 PROJECTS

involving installation of our wooden flooring completed annually.

9 HOURS

is how long the FINEX board can withstand in boiling water, which is comparable to 40 years of operation in real life



MISSION

Our mission is to offer every client affordable and fully prepared interior solutions for any living space. Each year, we develop conceptual products that anticipate trends and set production standards for interior design, benefiting architects, designers, and end consumers.

ADVANTAGES

Wide product range • The most in-demand products on the market • Option of ordering free samples
• Prompt delivery • Easy online selection.

CONSUMER BENEFITS

Availability and high quality of our products • Mobility • Time-saving • Expert approach
• Manufacturer's warranty.



37 000 PRODUCT ITEMS

FINEX | ENGINEERED DESIGN

- Boards (available in widths ranging from 140 mm to 290 mm).
Material: Oak, Ash, American Walnut, Walnut;
 - Parquet: Herringbone, Chevron, Hungarian.
Material: Oak, Ash, American Walnut, Walnut;
 - Wooden tiles, available both in the catalog and custom-made according to individual design.
Material: Oak, American Walnut + with brass and marble inserts.
 - Decorative pattern panels and borders, available both in the catalog and custom-made according to individual design.
Material: Oak, American Walnut + with inserts of valuable wood, marble (available in the catalog and upon customer request), brass, mother-of-pearl resin.
- Decorative grilles for floor convector units;
- Veneered baseboards.

FINEX | SOLID WOOD

- Board. Material: oak;
- Parquet: Herringbone, Chevron, Hungarian.
Material: oak;
- Board for use in wet areas. Material: teak;
- Barn board for wall cladding.
Material: softwood.

IC DECOR | PARGETING, PAINT FOR WALLS AND CEILINGS

FINEX | DECKING AND FACADE BOARD

Material: larch, thermo-ash, teak, cumaru, merbau, ipe.

FINEX | JOINERY

- Stairs;
- Window sills, doors, wall panels, beams, slats, baseboards (upon customer's request).

FLOOR CARE PRODUCTS

- Cleaner for flooring with oil finish;
- Cleaner for flooring with a matte finish varnish;
- Cleaner for flooring with a glossy finish varnish;
- Cleaner for flooring with oil finish.

ARTE TECH™ TECHNOLOGY

PLYWOOD BASE MADE FROM
RUSSIAN BIRCH TREES 9.5-15.5 MM

FLEXIBLE COLD-PRESSED LAYER
POLYURETHANE GLUE

WORKING LAYER MADE OF SOLID
WOOD SPECIES (2.5-5MM)



30-YEAR WARRANTY ON OUR PRODUCTS

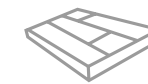
The Arte Tech engineering design blends specialized moisture-resistant birch plywood with valuable lamellas of oak, ash, or walnut. Its sturdy structure allows for a diverse range of widths and lengths, making it ideal for crafting robust natural wood flooring.

Arte Tech also offers the possibility of various artistic installations, including Herringbone and Chevron parquet, decorative pattern panels, and wooden tiles.

This design gives you the chance to create a distinctive, refined flooring that mirrors your personal style and seamlessly complements your interior. Arte Tech's combination of durability, beauty, and engineering prowess positions it as the optimal choice for those seeking a high-quality flooring solution.



Eco-friendly material



The multi-layer design offers exceptional wear resistance and stability.



Utilizing both standard and custom-made elements allows for the easy creation of a unique floor design.



Installation is fast and straightforward, with minimal risks. Each element is precision-produced by high-tech machines, and the final coating is applied during production, virtually eliminating the possibility of errors on-site.



A vast array of styles, wood species, sizes, grades, textures, and coatings provides an endless variety of design options.



Modern automated production ensures competitive prices and the timely execution of orders for commercial and private projects at the highest level worldwide.



XVII Century

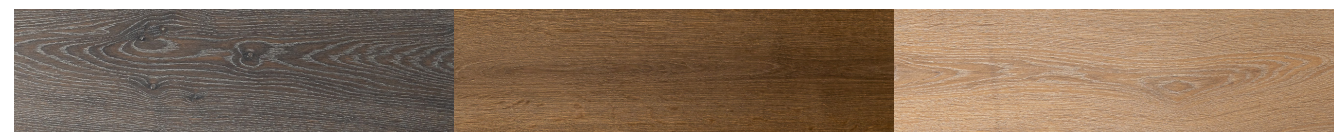
Alderton

Bradfield



Silver Smoke

Greywood



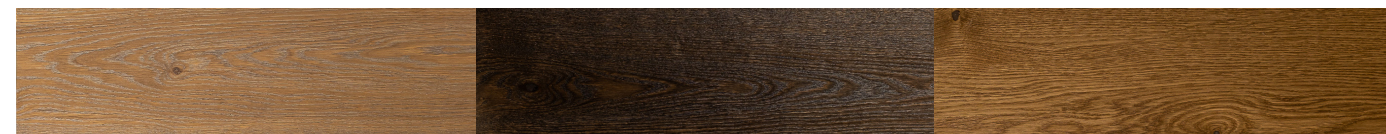
Leicester

Ludlow

Preston

RENAISSANCE COLLECTION

This collection showcases intricate colors that are unattainable with colored oils. Upon completion, the flooring transforms into a deep, rich red. Over the span of three to nine months, this red hue evolves into a warm amber-brown. The exquisite array of colors imbues the design with unparalleled uniqueness.



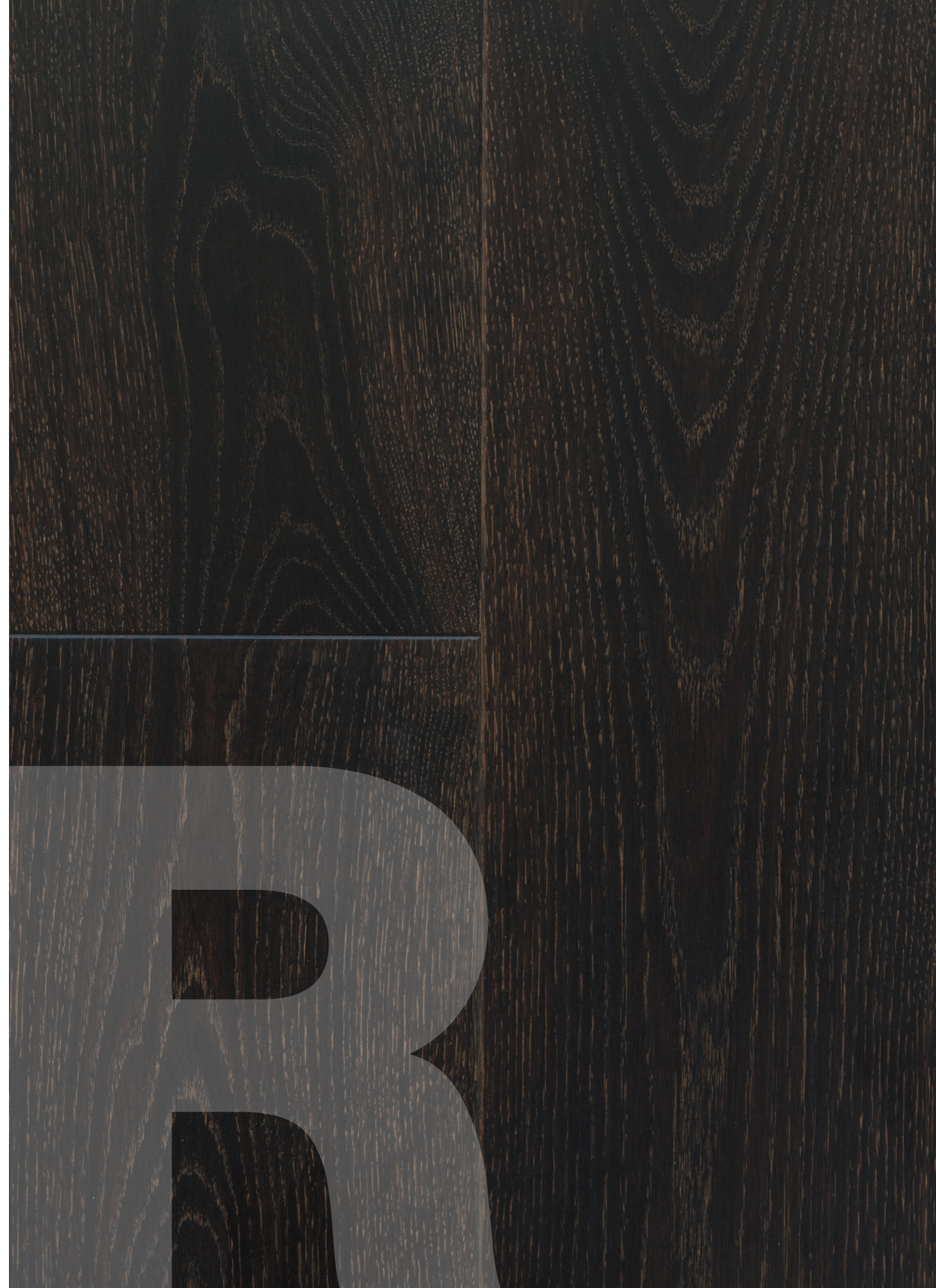
Saint Bees

Bridge

Smoke (Sanded)



Smoke (Brushed)





Project by Anastasia Rykova (S-Style). Engineered wood in Smoke and Silver design.



TEXTURES
Brushed

FINISH
FINEX Diamond UV Oil

FINISH WARRANTY
1 year for an UV oil

GRADES
Premium
Character

MAINTENANCE
FINEX Flooring Soap
FINEX Maintenance Oil





Colonial Style

Unfinished Look

Virgin



Karlail New

Vicksburg



Gram

Irbis

Canna



Oak Natural

Nordic New

ORIGINAL COLLECTION

A fusion of timeless, organic, and contemporary hues creates a diverse palette. Various design styles are achieved by employing different colors in the finishing coating. The collection is characterized by the pronounced natural appeal of wood coupled with exceptional durability. With a selection of 55 colors and two textures, it unveils limitless design possibilities.



Ratlin

Rodsher



Dove Grey

Black Walnut

Gentle



Estate New

Melassa



TEXTURES
Sanded, Brushed

FINISH
FINEX Diamond UV Oil, an innovative UV hardening oil, characterized by high chemical resistance, ease of use, and the possibility of local restoration.

FINISH WARRANTY
1 year for UV oil

GRADES
Prime XL, Premium, Select, Classic, Nature, Character, Life, Rustic,

MAINTENANCE
FINEX Flooring Soap,
FINEX Maintenance Oil



Project by A+A architect group.
Milta engineered wood.







Ashley

Viletta

Arctic Uni



Unfinished Look Uni

Amandes



Natural Uni

Chestnut

Smoke Uni



Solis

Nappa

NATURE COLLECTION

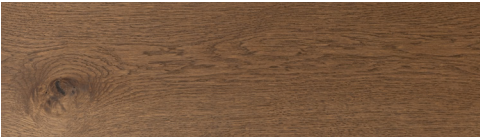
This collection presents a fresh perspective on natural wood floors and their inherent beauty. This flooring requires minimal maintenance and proves highly practical. The textured surface, featuring an expressive wood pattern, maintains its original allure over many years, thanks to meticulous brushing. The finishing coating, a matte varnish known as FINEX Diamond UV Natur, enhances both the aesthetic and functional aspects.



Terreno New

Cramond

Milta



Reeds





Project by Bakharev & Partners
architecture bureau. Wooden tiles in
Fiocchi design.



TEXTURES
Brushed

FINISH
FINEX Diamond UV Natura
is a premium scratch-
resistant UV varnish
enhanced with
corundum for additional
protection.

FINISH WARRANTY
1 year for the Natura UV
varnish

GRADES
Premium, Select,
Classic, Nature,
Life, Rustic

MAINTENANCE
FINEX Hydro Cleaner,
FINEX Hydro Care





Denver (WL)

Rodsher (WL)

Black Walnut (WL)



XVIII Century(WL)

Estate new (WL)



Bjorn (WL)

Colonial Style (WL)

Bert (WL)

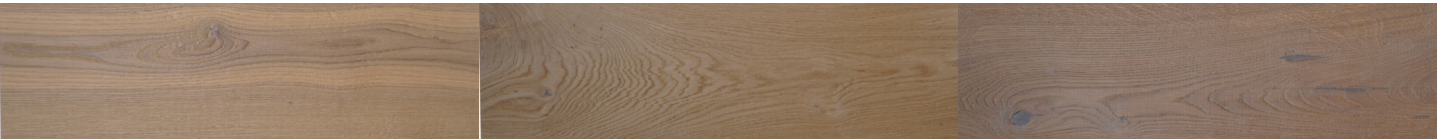


Smoke (WL)

Oak Natural (WL)

WELLNESS WOOD COLLECTION

Introducing the WellnessWood Collection - a stunning embodiment of natural beauty and individuality. Defined by its distinctive texture, deep brushing, patched cracks, knots, and subtle height variations, each element of this flooring narrates its own compelling story. Embrace WellnessWood to craft an exceptional interior for your home or office, expressing your profound connection to the natural world.



Princeton (WL)

Unfinished Look (WL)

Preston (WL)



Virgin (WL)

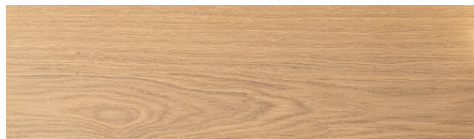








Oak Natural Lacquer



Malton

QUARTZ
COLLECTION

A collection that blends the timeless appeal of lacquered parquet floors with modern technologies. With its smooth sanding and glossy finish, the parquet will effortlessly complement your elegant interior.



Great





Project by Olga Tishenko. Chevron
parquet in the Unfinished Look design



TEXTURES
Smoothly polished

FINISH
FINEX Diamond UV
Classic (high-gloss
UV varnish).

GRADES
Premium
Classic

FINISH WARRANTY
3 years for an UV
Classic varnish

MAINTENANCE
FINEX Hydro
Cleaner, FINEX Hard
Floor Fresh



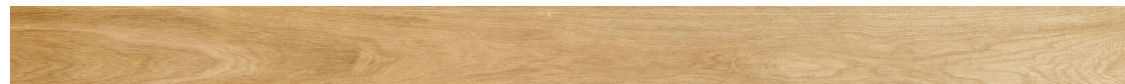
GRADES

The primary objective of our grades is to offer you a diverse range of designs that complement various interior styles.

Our design experts, responsible for crafting grades, have devised specialized methods for sorting wood during production. These methods vary based on the quantity and characteristics of wood features, including rings, knots, cracks, and natural variations in wood color.

Every FINEX product undergoes meticulous processing and multi-stage quality control at each production phase, ensuring uniform reliability and durability across all our grades.

The FINEX assortment comprises three main grades, providing you with options that will undoubtedly suit your interior



PRIME XL

Prime XL represents a top-tier grade. It permits knots with a diameter of up to 15 mm (no more than two pieces per linear meter) in widths of 230 mm and up to 25 mm (no more than three pieces per linear meter) in widths of 260 and 290 mm. Sapwood (the outer, lighter, and most active part of the trunk) is restricted to up to 15 mm and no more than 5% of the batch volume. Core rays (channels through which moisture moves, creating a marbling effect) are allowed. The putty color is either light or dark (for the Renaissance collection).

PREMIUM

Premium represents the pinnacle of quality with virtually no knots. Single knots can reach 12 mm, but no more than two per linear meter. This grade is distinguished by minimal sapwood, limited to no more than 15 mm and 5% of the batch volume. Core rays are also permitted. The putty color is either light or dark (for the Renaissance collection).

SELECT

Select is a mellow, pure grade that preserves the natural color nuances of the wood. A single sapwood can reach half the area of the board (no more than 20% of the lot). Knots with a diameter of up to 15 mm (no more than three pieces per linear meter) and up to 10 mm (without restrictions) are allowed. Core rays are possible. A light color is used for putty.

RUSTIC

The most vibrant and dynamic grade, showcasing the distinctive structure of oak wood. The diameter of knots can reach up to 70 mm. The grade may contain cracks up to 5 mm and sapwood. At the same time, the size and number of knots and cracks do not impair the resistance of the coating to damage. Cores are allowed rays. Dark-colored putty is used for filling.

CLASSIC

Classic is a soft that preserves the natural color nuances of wood. It is distinguished by pronounced sapwood, which can reach up to half the area of the board. Possible core rays. Knots are also allowed (up to 25 mm and three pieces per linear meter). Knots with a diameter of up to 10 mm are allowed without restrictions. The putty color is light.

NATURE

Nature is another soft grade with emphasized details of the natural texture of wood. This grade allows knots up to 25 mm and limited sapwood up to half the board area, no more than 40% of the lot. Core rays are also allowed. The putty color is light.

CHARACTER

A lively grade with expressive texture. Knots up to 60 mm (for width 230 mm) and up to 70 mm (for width 260 mm and 290 mm) are possible. May be contain cracks up to 5 mm and limited sapwood up to 15 mm wide, no more than 5% of the lot volume. The size and number of knots and cracks do not impair the strength of the coating. Core rays are allowed.

LIFE

The Life grade is the most lively and active, with a pronounced wood structure. Knots are allowed without restrictions in quantity. The diameter of the knots can reach 60 mm. Cracks up to 5 mm and limited sapwood are also possible (up to 15 mm, no more than 5% of the batch volume). The size and number of knots and cracks do not reduce the strength of the coating. Core rays are allowed. A dark color is used for putty.

SPECIFICATIONS

TYPES OF SURFACE TEXTURES

SANDED

A traditional smooth sanded and polished surface.

BRUSHED

A surface undergoes treatment with metal brushes to accentuate the wood fibers.

WILDWOOD

A naturally dried board featuring prominent convex knots, cracks, and intentional marks from the sawmill.



FINISH TYPES

FINEX DIAMOND UV OIL

This innovative UV-cured oil is wear-resistant and crafted from a blend of natural and modified oils, ensuring exceptional durability with minimal maintenance needs. The finish achieves the timeless appearance of a traditionally oiled and waxed floor. Notably, it allows for localized restoration, setting it apart from other oil-based UV coatings available on the market.

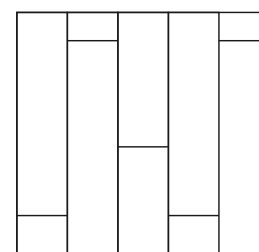
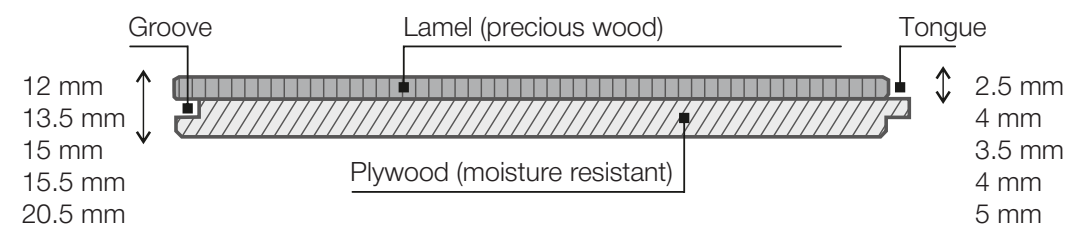
VARNISH FINEX DIAMOND UV NATURE

UV curing lacquer coating with matt, weather-resistant and scratch-resistant top layer. This coating is highly wear-resistant, maintenance-free and looks like a traditional oiled brushed floor.

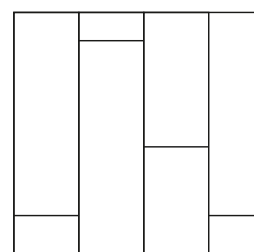
FINEX DIAMOND UV CLASSIC VARNISH

Boasting the highest level of wear resistance, this varnish surpasses comparable finishing coatings, invulnerable to scratch and abrasion. It is free from harmful components, including solvents.

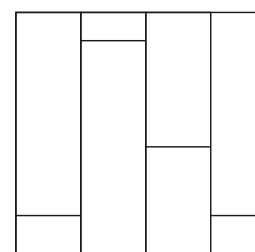
PLANK



W 140 mm



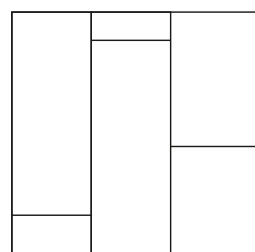
W 180 mm



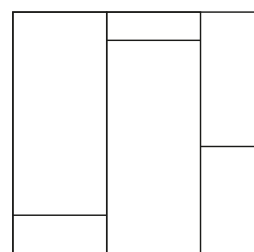
W 190 mm

Wood moisture content
is $8 \pm 2\%$.

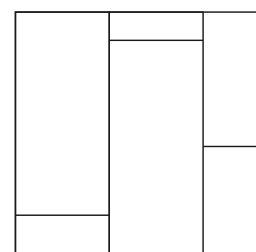
For Arte Tech products, the
tolerance for thickness is $+0/-0.4$
mm, for width/length ± 0.2 mm.



W 230 mm



W 260 mm



W 290 mm

COLLECTIONS: Original, Natura, Quartz, Renaissance, WildWood, Vintage.
SPECIES: Oak, Ash, American Walnut, Walnut.

Project by Dmitry and Daria Grigoriev from Buro2D studio.
FINEX engineering floorboards in Verjn design.





Project by architectural bureau SiO.
Herringbone parquet with brass inserts.

CURRENT DIMENSIONS AVAILABLE
TO ORDER

Species	Thickness	Width	Length	Grades
Oak	12/2.5 mm	140 mm	500-1810 mm 500-2310 mm	Nature (L), Rustic (D)
Oak	13.5/4 mm	180 mm	500-1810 mm 500-2310 mm	Select (L), Nature (L), Rustic (D)
Oak	15.5/4 mm	140 mm 190 mm	600-1800 mm 600-2100 mm 600-2400 mm	Premium (L), Classic (L), Life (D), Premium (D), Character (D)
Oak	15.5/4 mm	230 mm	900-1800 mm 900-2100 mm 900-2400 mm	Premium (L), Classic (L), Life (D), Premium (D), Character (D)
Oak	20.5/5 mm	230 mm 260 mm 290 mm	900-1800 mm 900-2100 mm 900-2400 mm 900-2700 mm 900-3000 mm	Prime XL (L), Character (D)
Oak	13/3 mm	180 mm	600-1800 mm	WildWood (Rustic)
Oak	15.5/4 mm	180 mm	600-1800 mm 600-2100 mm 600-2400 mm	WildWood (Rustic)
Oak	15.5/4 mm	230 mm	900-1800 mm 900-2100 mm 900-2400 mm	WildWood (Rustic)
Ash	13.5/4 mm	140 mm 180 mm	500-1810 mm 500-2310 mm	Premium (L), Classic (L), Life (D)
Walnut	15/3.5 mm	140 mm 190 mm	600-1800 mm	Premium (D), Nature (D)
American Walnut	15/3.5 mm	140 mm 190 mm	900-1800 mm 900-2100 mm 900-2400 mm	Premium (D), Nature (D)
American Walnut	15/3.5 mm	230 mm	600-1800 mm 600-2100 mm 600-2400 mm	Premium (D), Nature (D)
American Walnut	20.5/5 mm	260 mm 290 mm	900-1800 mm 900-2100 mm 900-2400 mm 900-2700 mm 900-3000 mm	Premium (D), Nature (D)

Project by Valeria Senkina (Dseesion).
Decorative pattern panel in the Rattlin design.



HERRINGBONE AND CHEVRON PARQUET

In modern interior design, classic styling patterns are once again gaining popularity. FINEX artistic styling stands out for its wide range of sizes.

GRADES: Premium, Nature,
Classic, Life, Rustic.

COLLECTIONS:
Original, Quartz, Natura,
WildWood, Renaissance, Vintage.

SPECIES: Oak, Ash,
American Walnut.



Project by Svetlana Mikhailova.
Chevron parquet in the Princeton design.







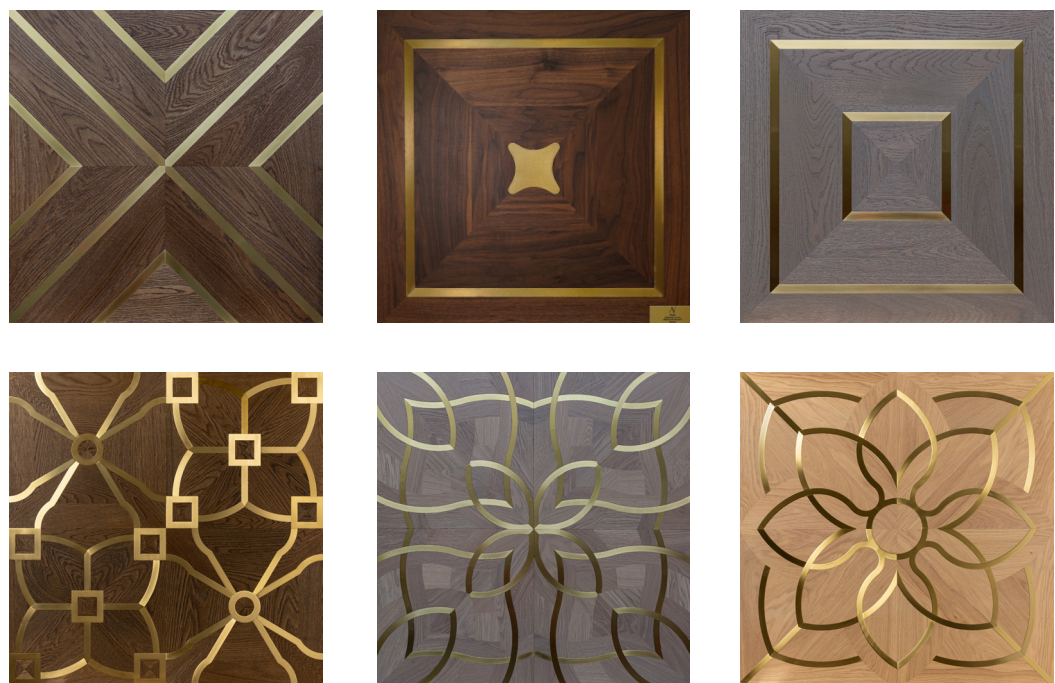
Project by Arcus Design.
Herringbone Parquet in «Violetta» design.

HERRINGBONE

Species	Thickness	Sizes	Grades
Oak	12/2.5 mm	110 x 595	Nature (L), Rustic (L),
Oak	15.5/4 mm	70 x 560; 110 x 595; 140 x 700; 190 x 1200	Premium (L), Classic (L), Life (L)
Oak	WildWood Arte Tech 15.5/4 mm	140 x 700	WildWood (Rustic)
Ash	13.5/4 mm	110 x 595	Premium (L), Classic (L)
Walnut	15/3.5 mm	90 x 595	Premium (D), Nature (D)
American Walnut	Arte Tech 15/3.5 mm	90 x 450, 110 x 595, 140 x 700	Premium (D), Nature (D)

CHEVRON

Species	Thickness	Sizes	Grades
Oak	12/2.5 mm	110 x 515	Nature (L), Rustic (L),
Oak	Arte Tech 15.5/4 mm	110 x 515 140 x 725 190 x 980	Premium (L), Classic (L), Life (L)
Oak	WildWood Arte Tech 15.5/4 mm	140 x 725	For the production of the WildWood collection, the Rustic grade with marks from a sawmill is used
Ash	13.5/4 mm	110 x 515	Premium (L), Classic (L)
Walnut	15/3.5 mm	90 x 525	Premium (D), Nature (D)
American Walnut	15/3.5 mm	110 x 515 140 x 725	Premium (D), Nature (D)

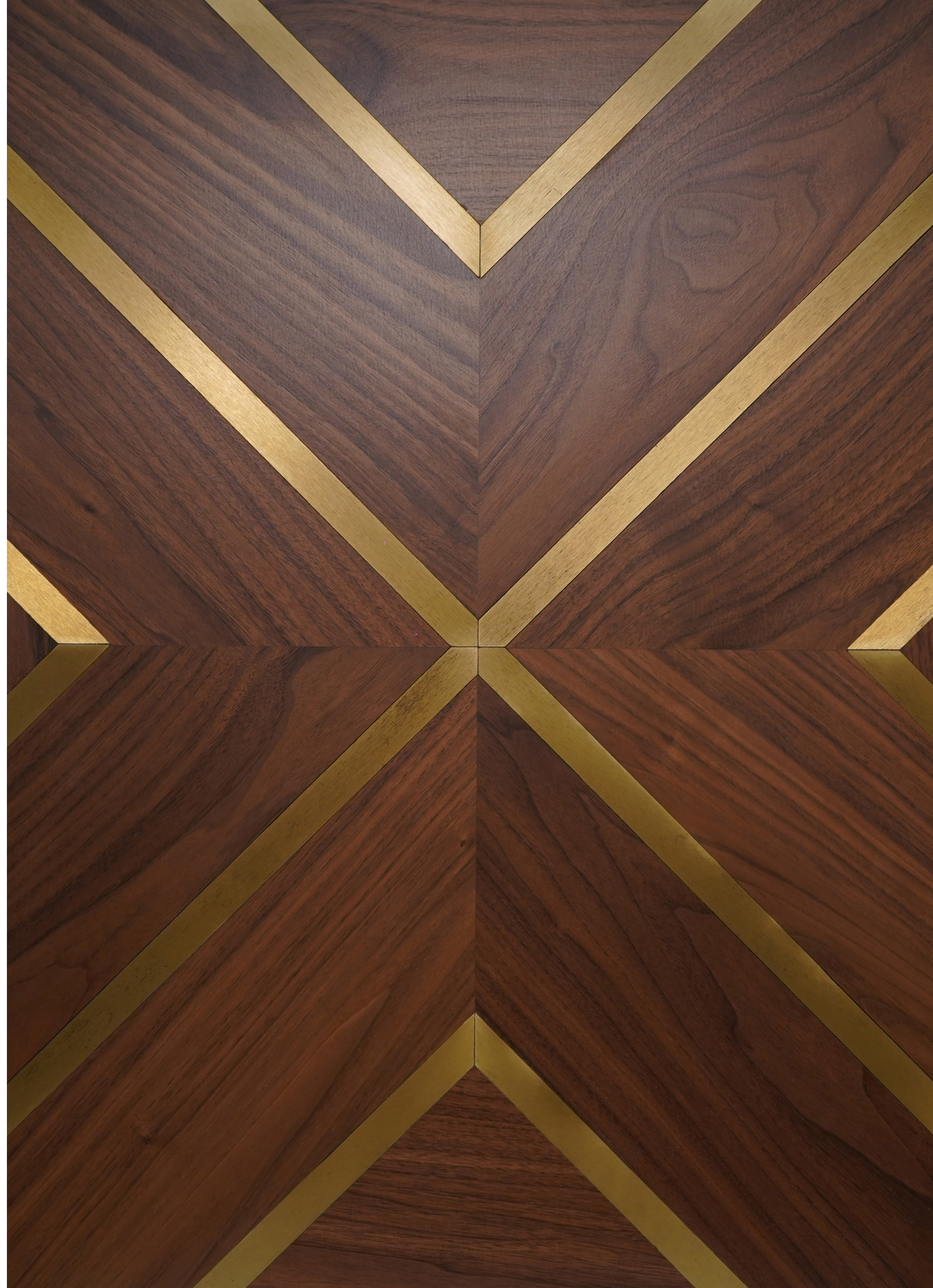


DECORATIVE PATTERN PANELS

FINEX pattern panels offer a high-tech reinterpretation of classic parquet patterns found in the most distinguished castles and palaces of the Old and New Worlds. Our collection features not only replicas of parquet designs from Versailles, Chenonceau, and other palaces but also original, contemporary designs of decorative pattern. The production of these panels employs a patented engineering technology, ensuring exceptional stability. Artistic parquet is available in oak and American walnut, featuring inserts of precious wood, brass, mother-of-pearl resin, and marble. Designs are available both in the catalog and custom-made.



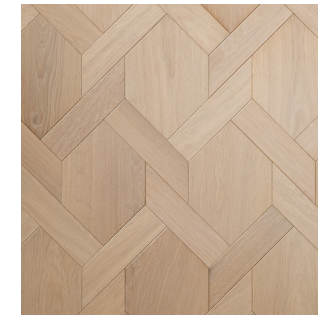
GRADES: Premium, Classic
COLLECTIONS: Original, Nature, WildWood, Renaissance
SPECIES: Oak, Ash, American Walnut.





Project by Yulia Nikiforova. Pierrefonds
decorative pattern panels with marble
inserts.





WOODEN TILES

Wooden tiles stand out as a distinctive product from FINEX. These tiles are versatile, suitable for both wall decoration and floor installation. Each element undergoes precision processing on automated machines, ensuring technologically validated patterns and a diverse range of colors. FINEX wooden tiles feature a tenon and groove along the perimeter, providing a secure fit. Choose from our standard designs or opt for customized tiles in terms of size and shape.

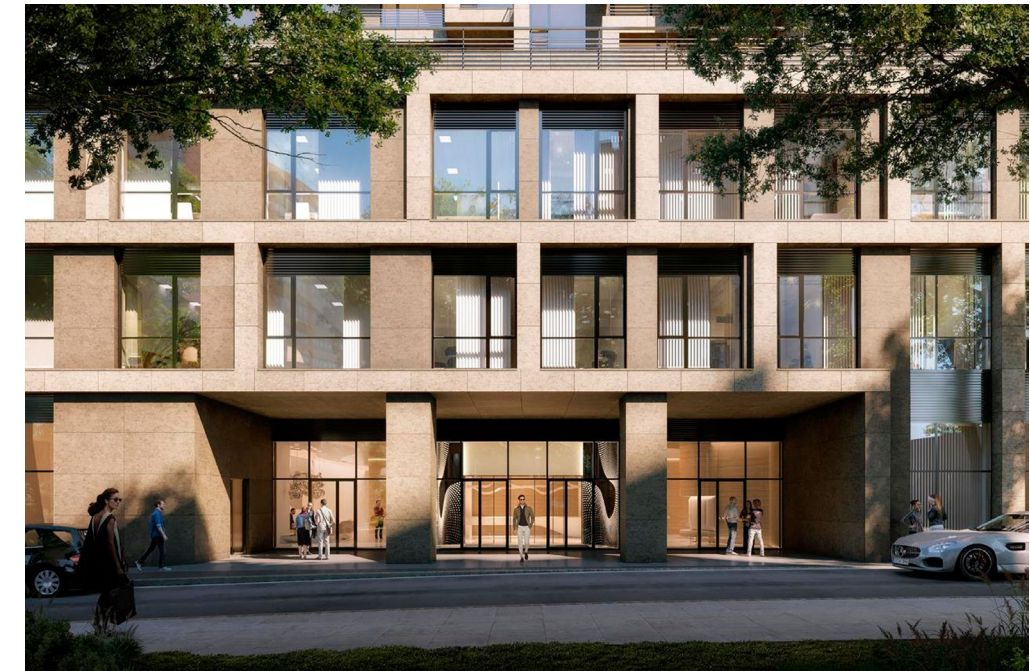


GRADES: Premium, Classic, Life, WildWood.
COLLECTIONS: Original, WildWood, Renaissance.
SPECIES: Oak, American walnut.

Project by Bakharev & Partners
architecture bureau. Wooden tiles
in Fiocci design.

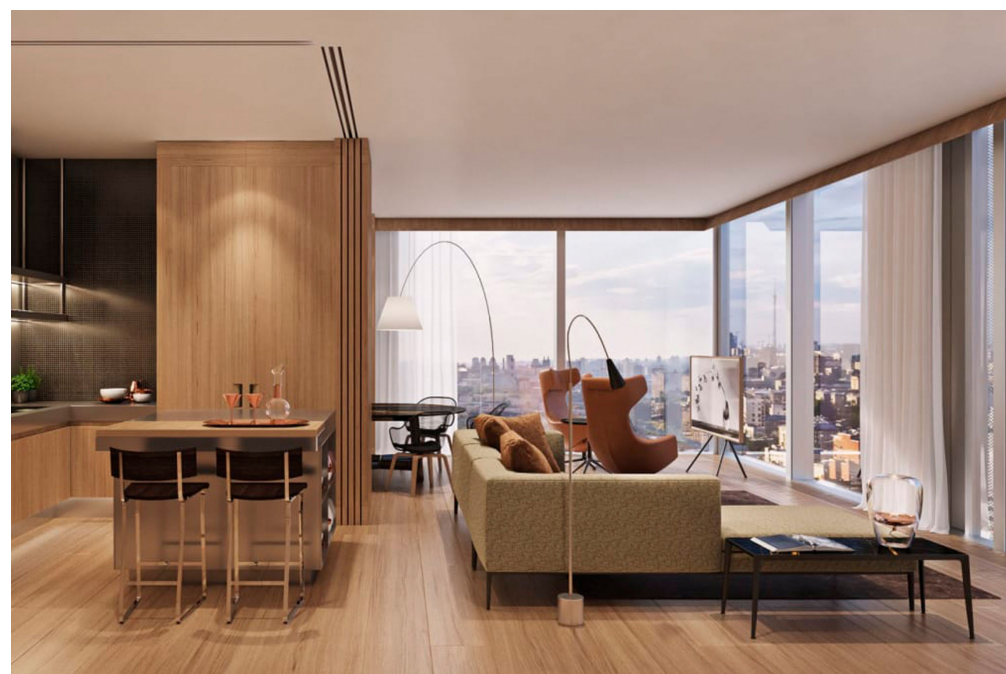


PROJECT REGISTRY



HILL 8 RESIDENTIAL COMPLEX

CAPITAL TOWERS RESIDENTIAL COMPLEX





LA RUE RESIDENTIAL COMPLEX



PRIME PARK RESIDENTIAL COMPLEX

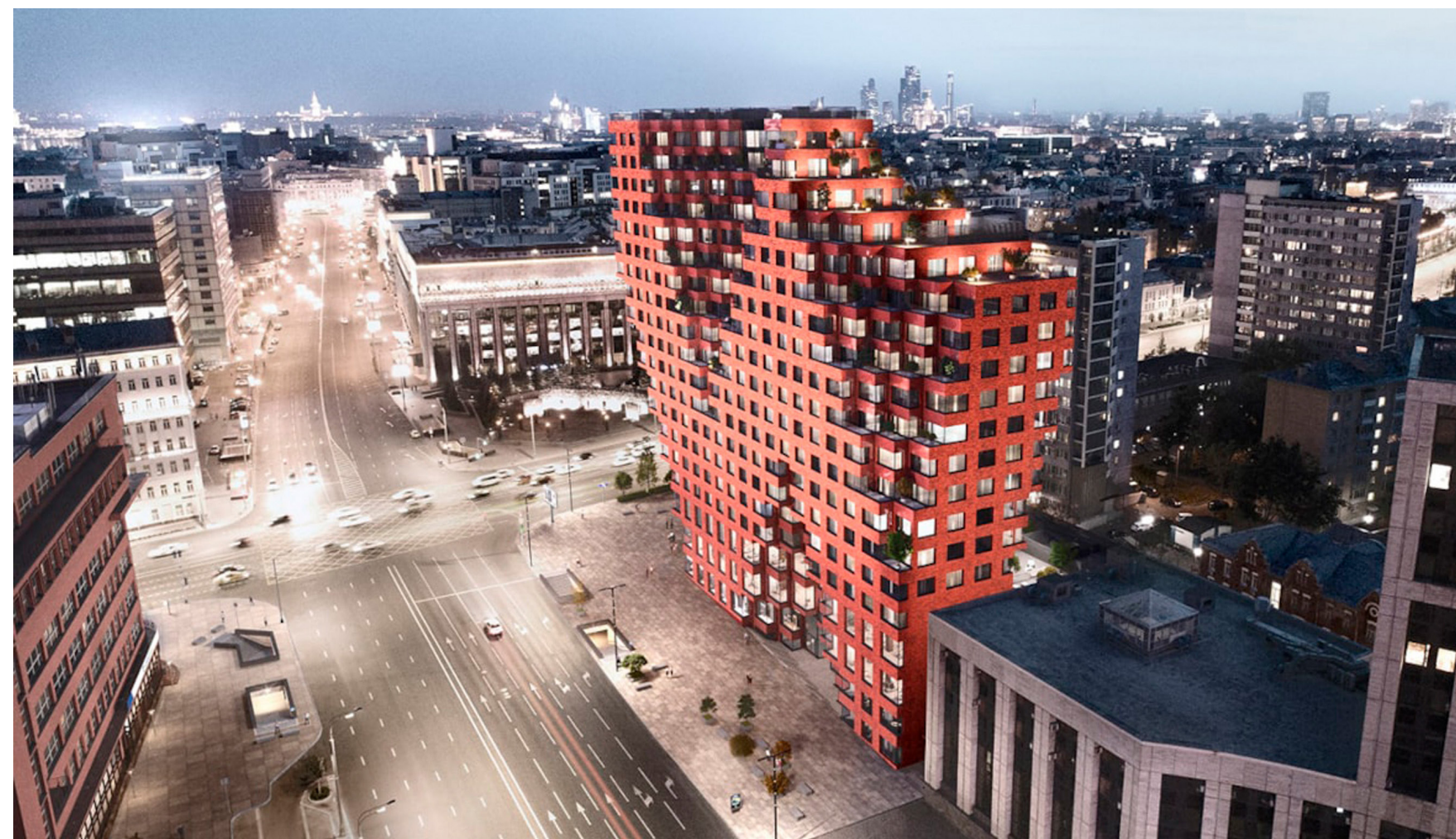




WHITE KHAMOVNIKI RESIDENTIAL COMPLEX



RED 7 RESIDENTIAL COMPLEX

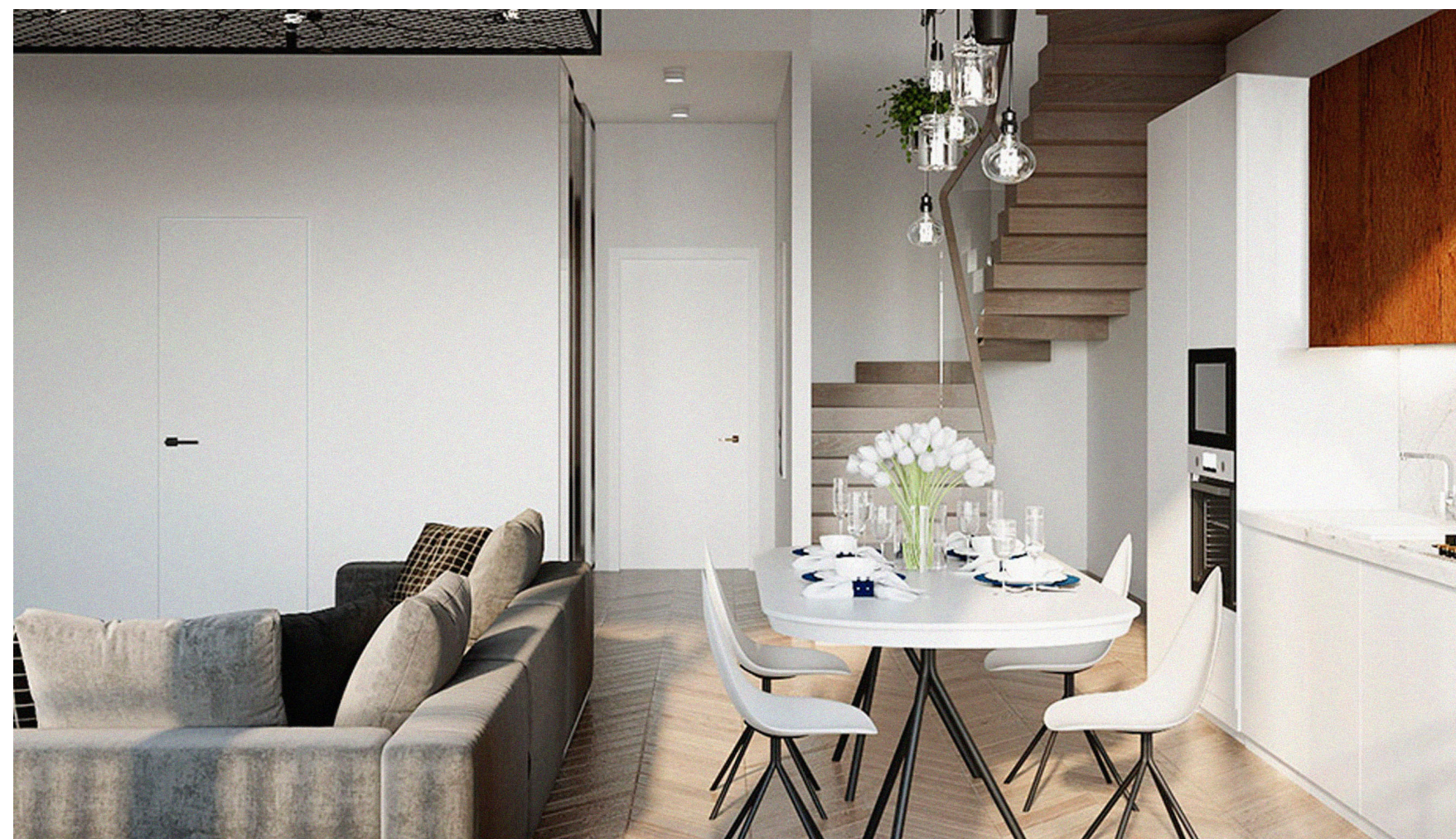




SIMPHONY RESIDENTIAL COMPLEX



APART HOTEL BOLSHEVIK





TEREKHOV BOUTIQUE



DIOR BOUTIQUE





GEORGE&PILIPP'S BAR

RESTAURANT BIBIREVO BY RAPPOPORT



